

ARCHITECT

Perkins + Will
1717 Arch Street, Suite 200
Philadelphia, Pennsylvania 19103
T: 215.569.1920
F: 215.569.1955

ENGINEER

Bohler Engineering
1600 Merco Drive, Suite 201
Cheltenham, PA 19014
P: 215.966.9100
F: 215.966.9102

STRUCTURAL ENGINEER

O'Donnell & Naccarato
111 South Independence Mall East, Suite 500
Philadelphia, PA 19106
P: 215.253.3788
F: 215.627.1051

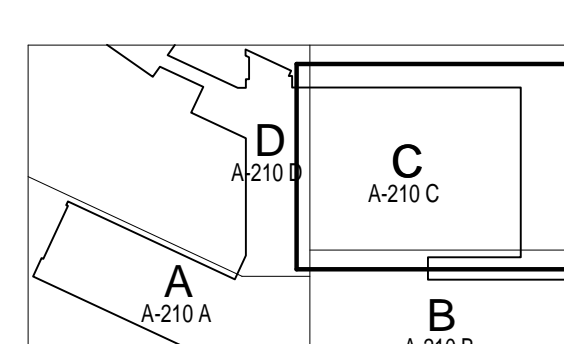
MFP & FIRE PROTECTION ENGINEER

PWI Engineering
327 N. 17th St.
Philadelphia, PA 19103
P: 215.253.1909
F: 215.241.9112

ISSUE FOR
PROPOSAL
REQUEST #28
03-18-11



NO.	ISSUE	DATE
A	ADDENDUM #1	11-10-09
C	ISSUE FOR GMP PERMITS, PATCH APPROVAL	12-08-09
D	ISSUE FOR PERMIT RESPONSE	01-22-10
1	ISSUE FOR EARLY BID	02-10-10
2	ISSUE FOR PHA CLOSING	02-17-10
3	ISSUE FOR CONSTRUCTION	03-05-10
4	ISSUE FOR PHA CLOSING	03-19-10
5	PROPOSAL REQUEST #1	03-19-10
6	ARCHITECTS SUPPLEMENTAL INSTRUCTION #1	03-19-10
7	ARCHITECTS SUPPLEMENTAL INSTRUCTION #2	03-19-10
8	ARCHITECTS SUPPLEMENTAL INSTRUCTION #3	03-19-10
9	ARCHITECTS SUPPLEMENTAL INSTRUCTION #4	03-19-10
10	ARCHITECTS SUPPLEMENTAL INSTRUCTION #5	03-19-10
11	ARCHITECTS SUPPLEMENTAL INSTRUCTION #6	03-19-10
12	ARCHITECTS SUPPLEMENTAL INSTRUCTION #7	03-19-10
13	ARCHITECTS SUPPLEMENTAL INSTRUCTION #8	03-19-10
14	ARCHITECTS SUPPLEMENTAL INSTRUCTION #9	03-19-10
15	ARCHITECTS SUPPLEMENTAL INSTRUCTION #10	03-19-10
16	ARCHITECTS SUPPLEMENTAL INSTRUCTION #11	03-19-10
17	ARCHITECTS SUPPLEMENTAL INSTRUCTION #12	03-19-10
18	ARCHITECTS SUPPLEMENTAL INSTRUCTION #13	03-19-10
19	ARCHITECTS SUPPLEMENTAL INSTRUCTION #14	03-19-10
20	ARCHITECTS SUPPLEMENTAL INSTRUCTION #15	03-19-10
21	ARCHITECTS SUPPLEMENTAL INSTRUCTION #16	03-19-10
22	ARCHITECTS SUPPLEMENTAL INSTRUCTION #17	03-19-10
23	ARCHITECTS SUPPLEMENTAL INSTRUCTION #18	03-19-10
24	ARCHITECTS SUPPLEMENTAL INSTRUCTION #19	03-19-10
25	ARCHITECTS SUPPLEMENTAL INSTRUCTION #20	03-19-10
26	ARCHITECTS SUPPLEMENTAL INSTRUCTION #21	03-19-10
27	ARCHITECTS SUPPLEMENTAL INSTRUCTION #22	03-19-10
28	ARCHITECTS SUPPLEMENTAL INSTRUCTION #23	03-19-10
29	ARCHITECTS SUPPLEMENTAL INSTRUCTION #24	03-19-10
30	ARCHITECTS SUPPLEMENTAL INSTRUCTION #25	03-19-10
31	ARCHITECTS SUPPLEMENTAL INSTRUCTION #26	03-19-10
32	ARCHITECTS SUPPLEMENTAL INSTRUCTION #27	03-19-10
33	ARCHITECTS SUPPLEMENTAL INSTRUCTION #28	03-19-10
34	ARCHITECTS SUPPLEMENTAL INSTRUCTION #29	03-19-10
35	ARCHITECTS SUPPLEMENTAL INSTRUCTION #30	03-19-10



Key Plan - 1st Floor

Sheet Information

Date: 08-17-2009

Job Number: 26601.001

Drawn: APW

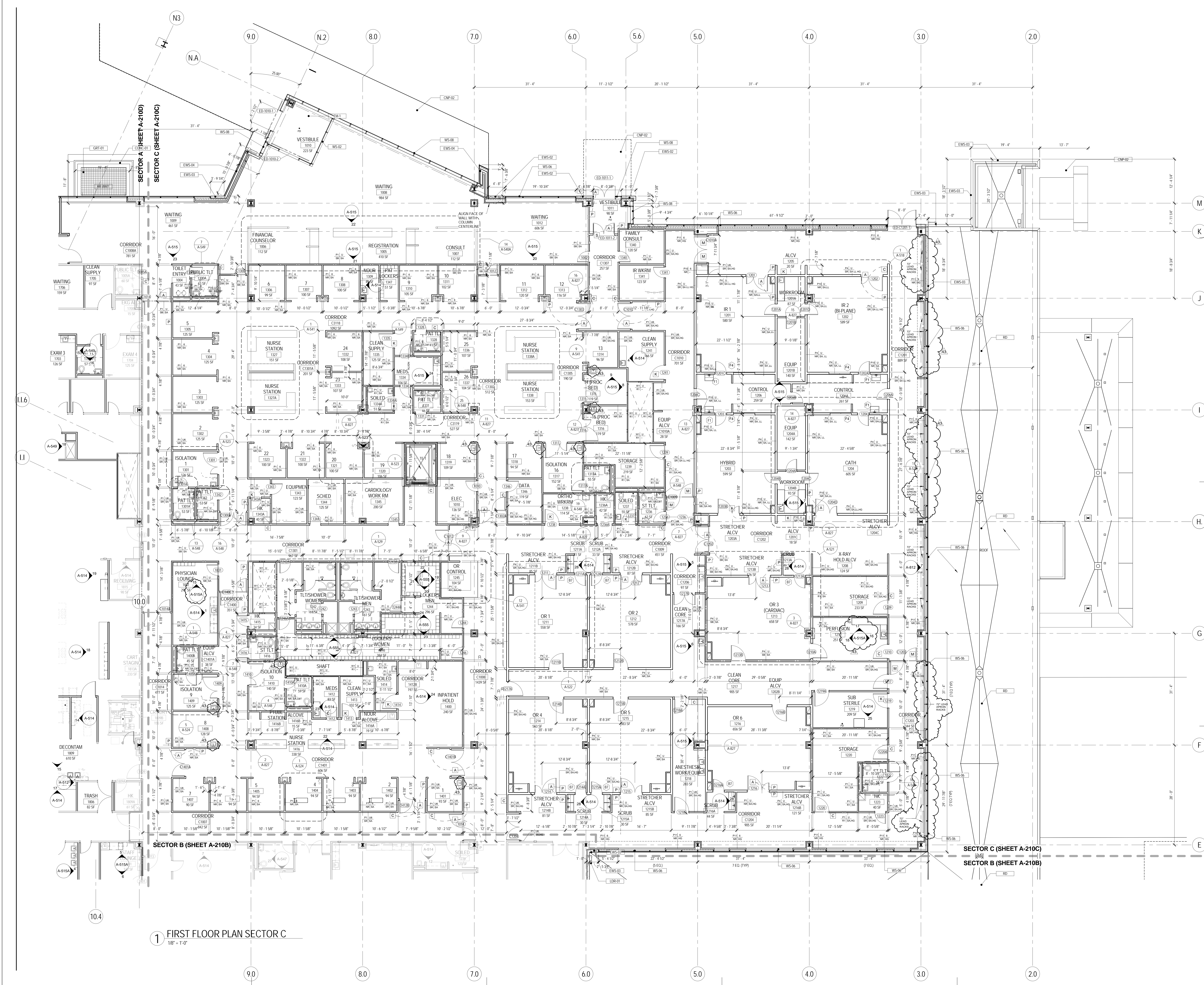
Checked: []

Approved: []

Title: []

FIRST FLOOR PLAN
SECTOR C

Sheet
A-210 C



1 FIRST FLOOR PLAN SECTOR C
1/8" = 1'-0"

4/20/2011 3:34:12 AM
 P:\Perkins+Will\Projects\New_Regional_Medical_Center\CS\CONTRACTS\RM\A210_C\A210_C.dwg